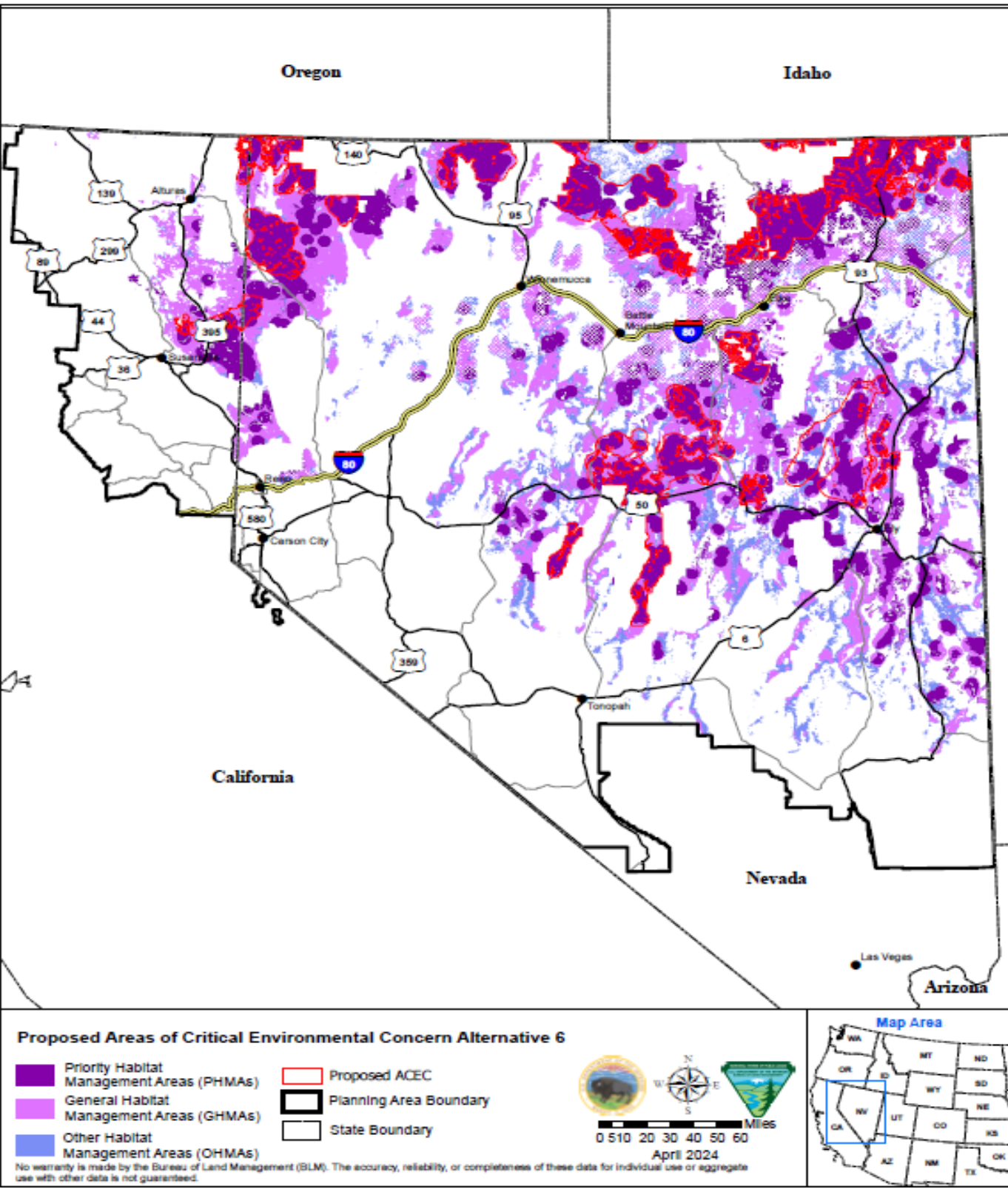
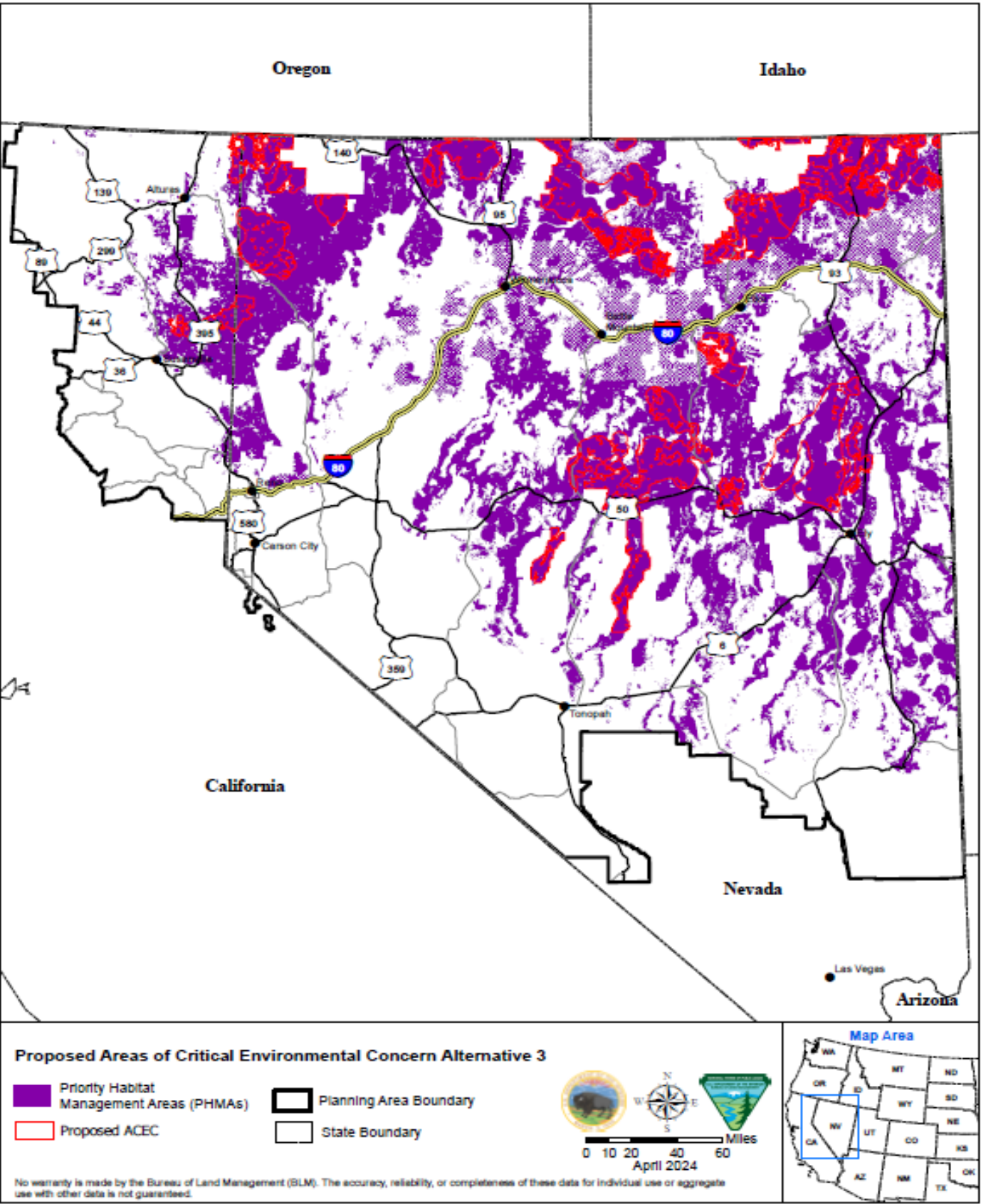


AREAS OF CRITICAL ENVIRONMENTAL CONCERN



ACEC Nominations and Evaluation

- ☐ Nominations

➤ The BLM received internal and external nominations for ACEC designations, including 19 in NV/CA.
- ☐ Relevance and Importance Evaluation

➤ **Relevance:** The presence of GRSG meets the relevance criteria across the entire range.

➤ **Importance:** Importance evaluations consider substantial significance to include special worth, consequence, distinctiveness, or cause for concern. For the importance criteria to be met, values must be more than locally significant. The BLM evaluated importance of nominated ACECs within NV/CA using the following criteria:
 - Population density (e.g., Doherty et al., 2016);
 - Lek and habitat persistence (e.g., Wann et al., 2022, Palmquist et al., 2021, Rigge et al. 2021);
 - Genetic uniqueness and connectivity (e.g., Cross et al, 2018, Row et al. 2018, Cross et al. 2023, Oyler- McCance et al., 2022);
 - Amount of existing habitat disturbance and habitat quality (e.g., Doherty et al., 2022).
- ☐ Draft RMPA & EIS

➤ All 19 nominated ACECs met the criteria and were included in the Draft RMPA & EIS, totaling 5,766,150 acres. Additional details are available in **Appendix 5**.

ACEC Management

Resource	Alternative 3	Alternative 6
Wind/Solar	Exclusion	Exclusion
Major ROW	Exclusion	Exclusion
Minor ROW	Exclusion	Avoidance
Oil & Gas	Closed	Open w/major stipulations, WEMS & Exceptions
Nonenergy Leasable	Closed	Closed to new leases & expansion
Salable	Closed	Closed w/ free use exceptions
Locatable	Withdrawal Recommended	Available

